

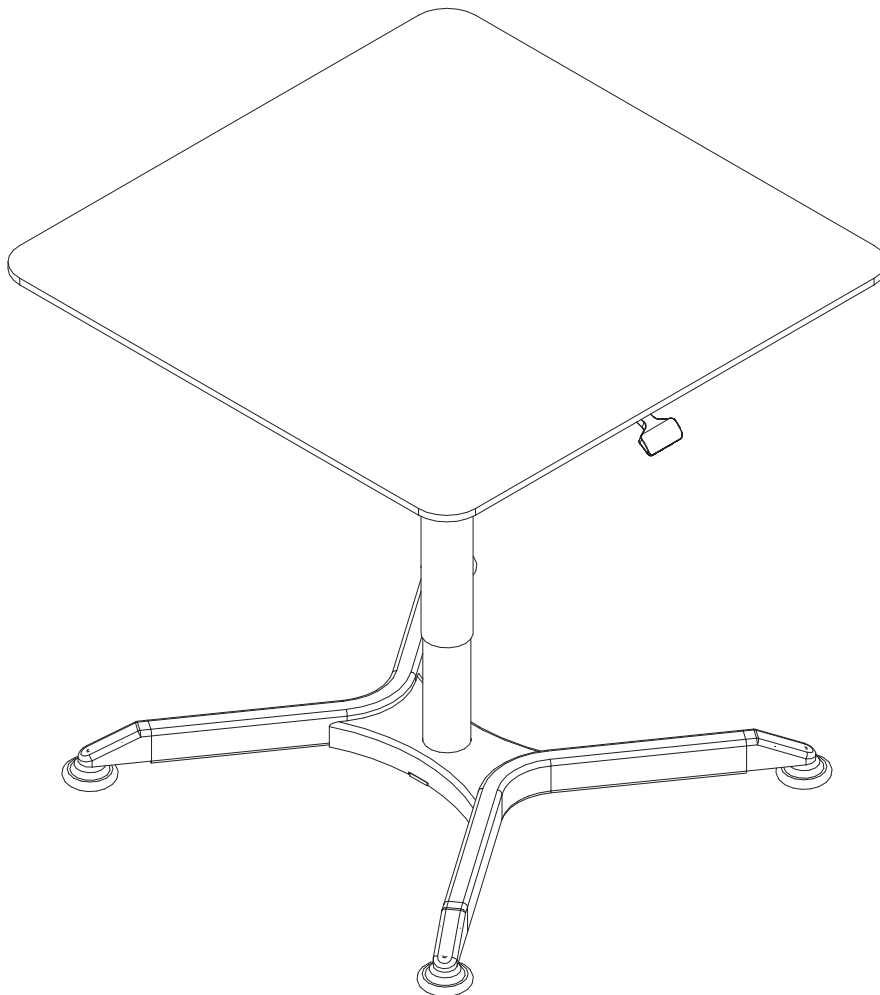
J.BURROWS

• • • • •

ASSEMBLY INSTRUCTIONS

MATRIX GAS LIFT SQUARE TABLE WHITE

JBMAGLSQWE



This design and instruction booklet is subject to copyright.
www.officeworks.com.au

2CTNS

Recommend 2 adults to assemble



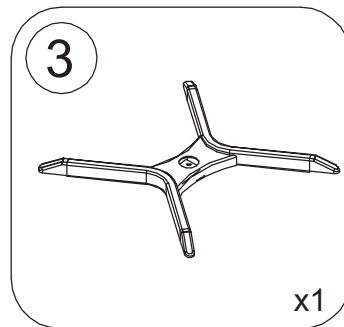
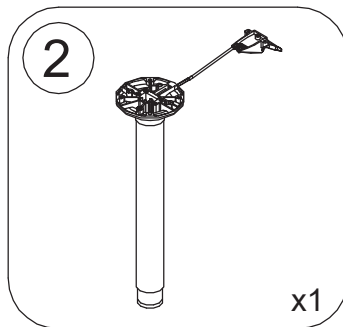
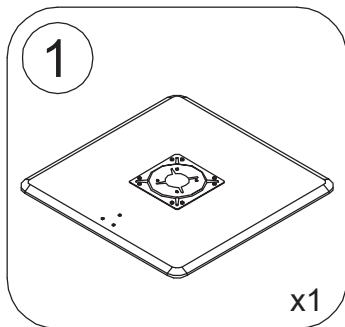
Assemble item on a clean flat surface



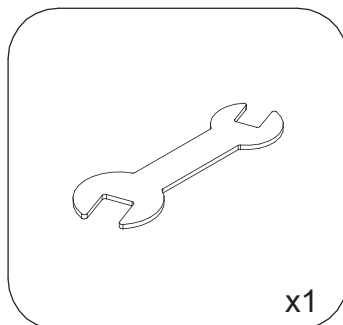
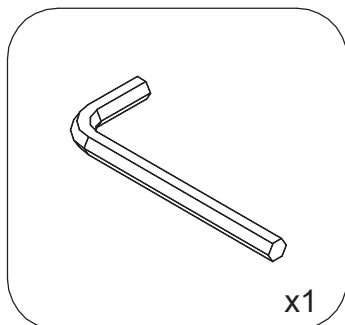
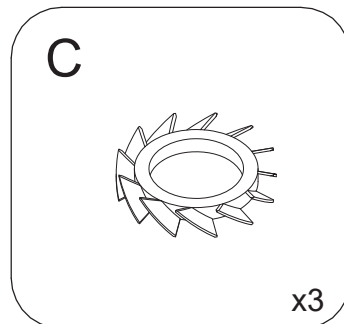
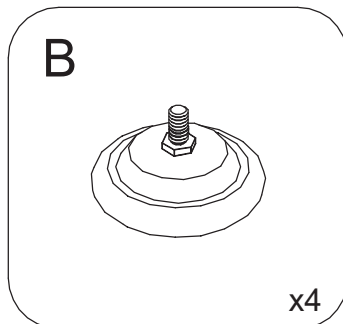
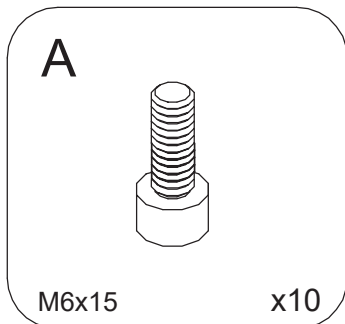
WARNING

- Please check you have all hardware before assembling.
- If you think you are missing any hardware, please contact the store of purchase.
- Please ensure you have the name of the item and hardware part required and quantity.
- Please retain your receipt for proof of purchase to validate warranty. Enjoy your new purchase.
- Do not tighten the screws before all screws are in the right place.
- Do not use this desk unless all bolts, screws and knobs are firmly secured.
- At least every 4 months, check all bolts, screws and knobs to be sure they are tight.
- If parts are missing, broken, damaged or worn, stop using the product until repairs are made, using factory authorised parts.
- Failure to follow these warnings could result in serious injury.

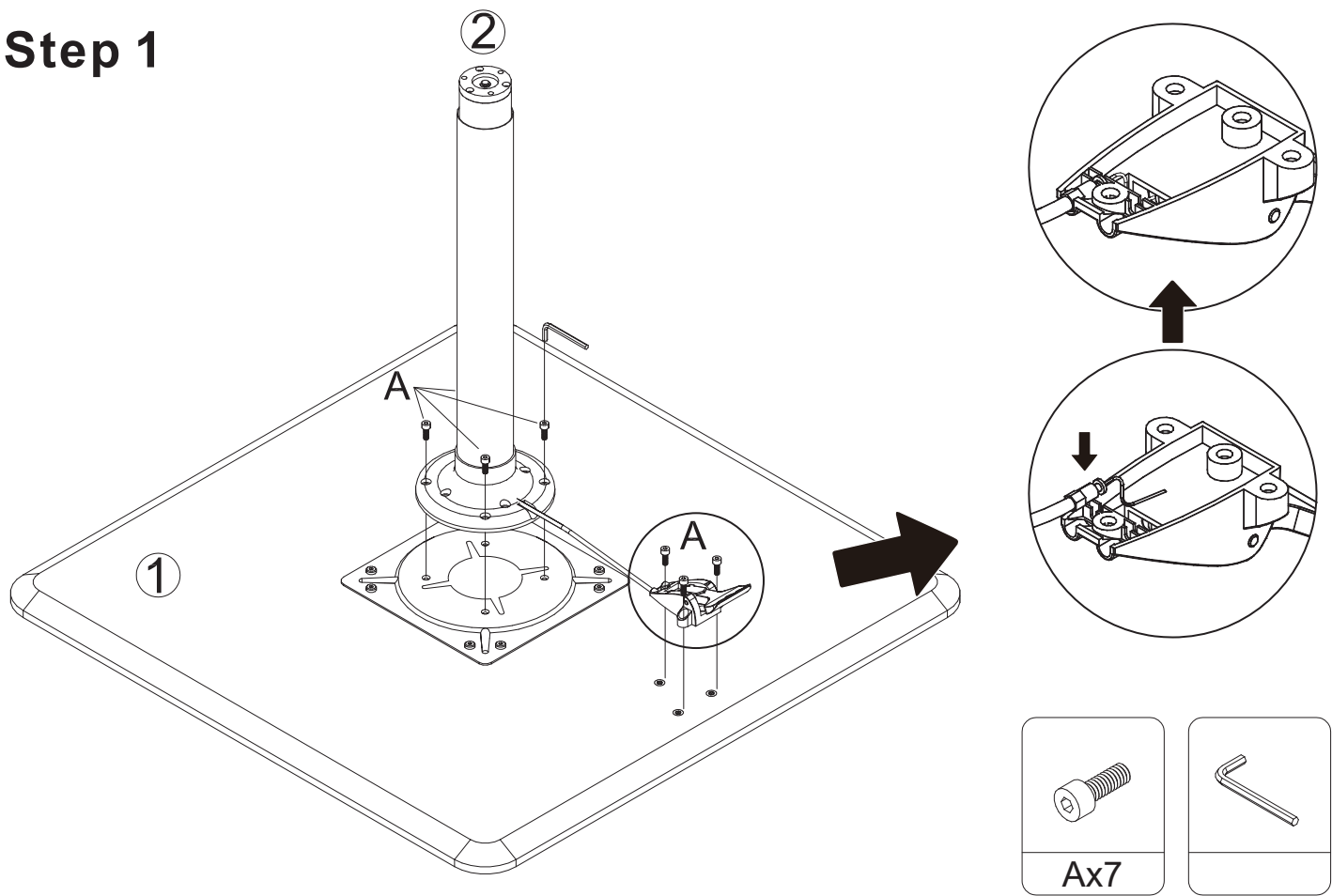
PARTS LIST



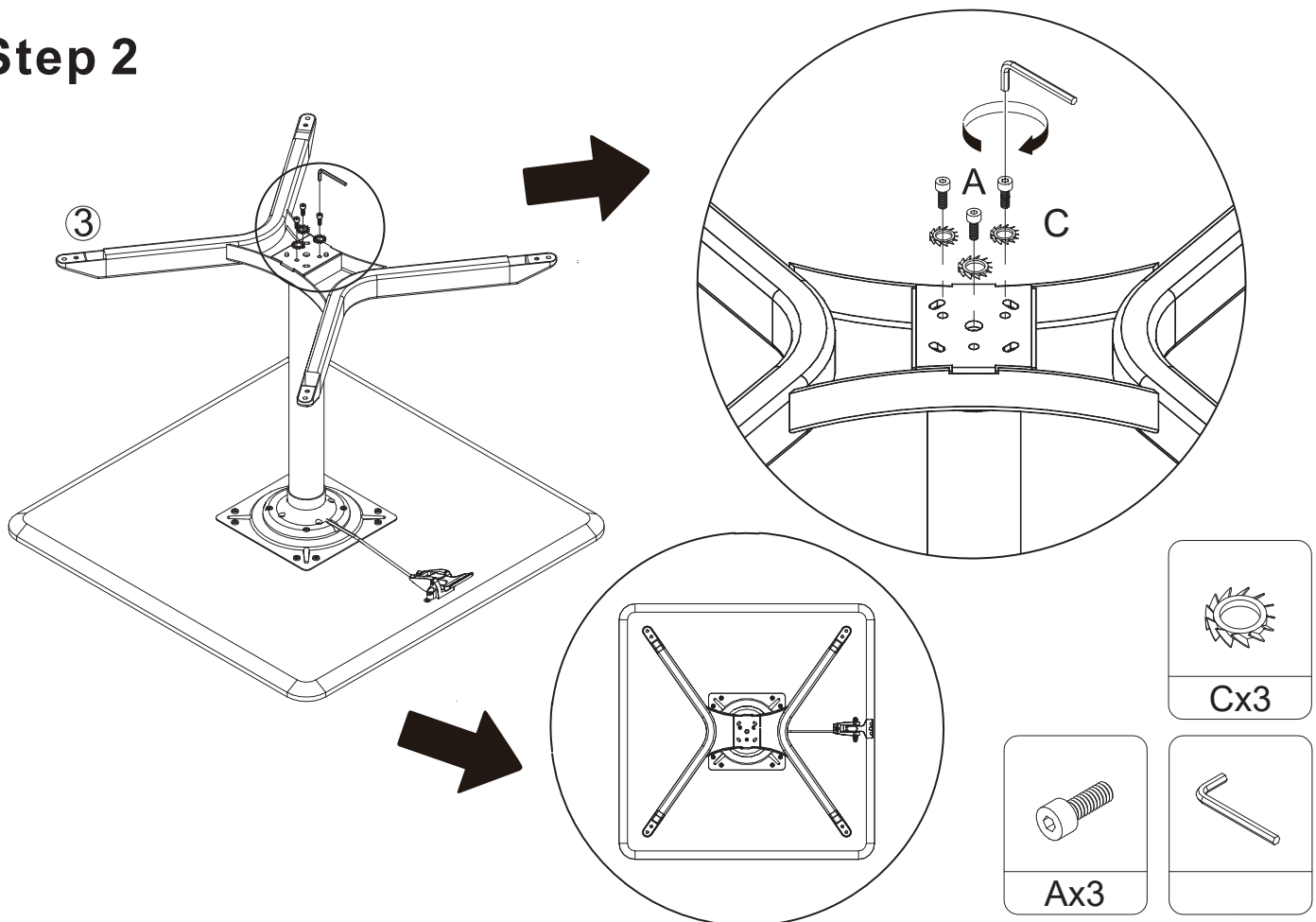
HARDWARE LIST



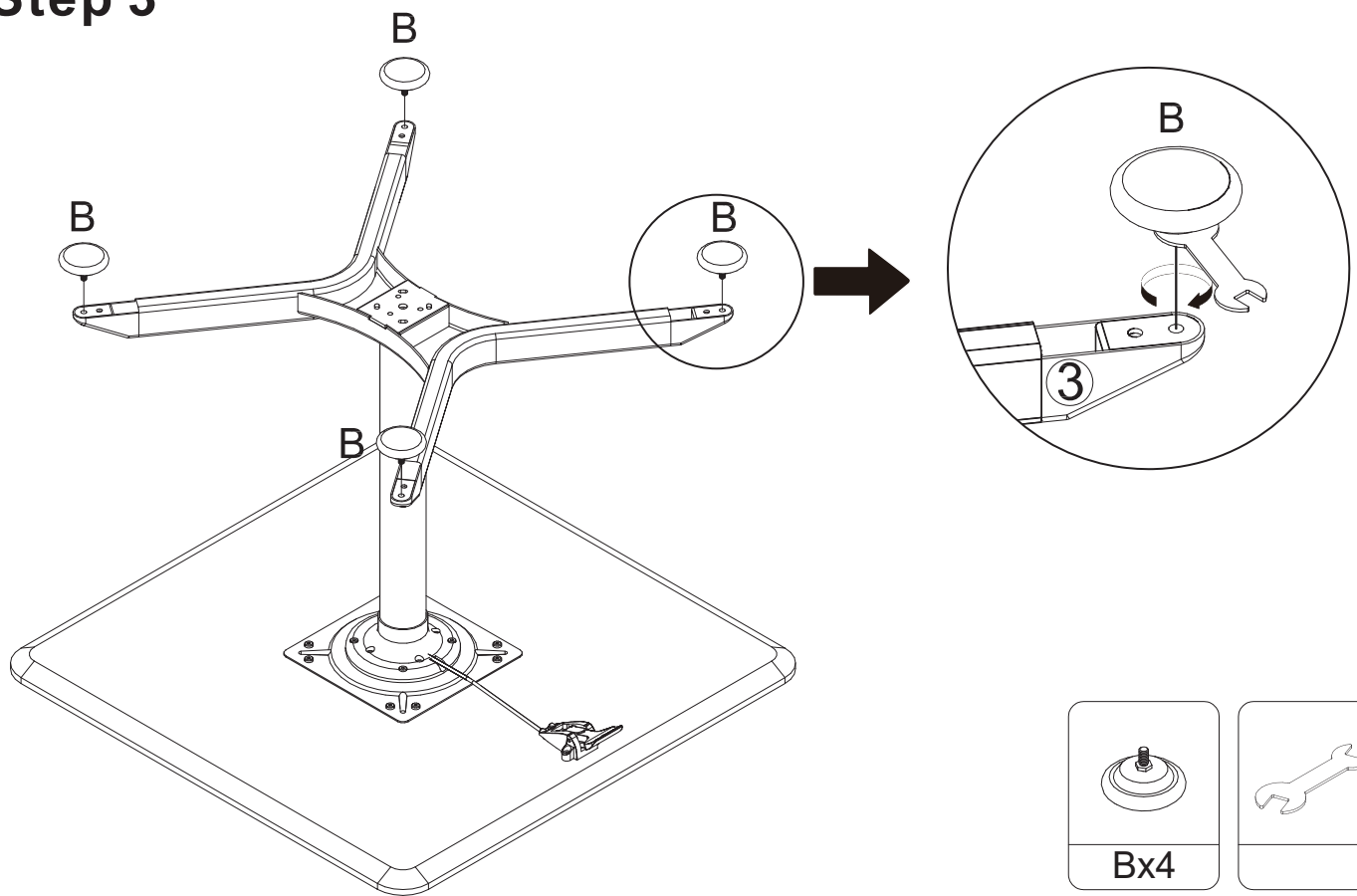
Step 1



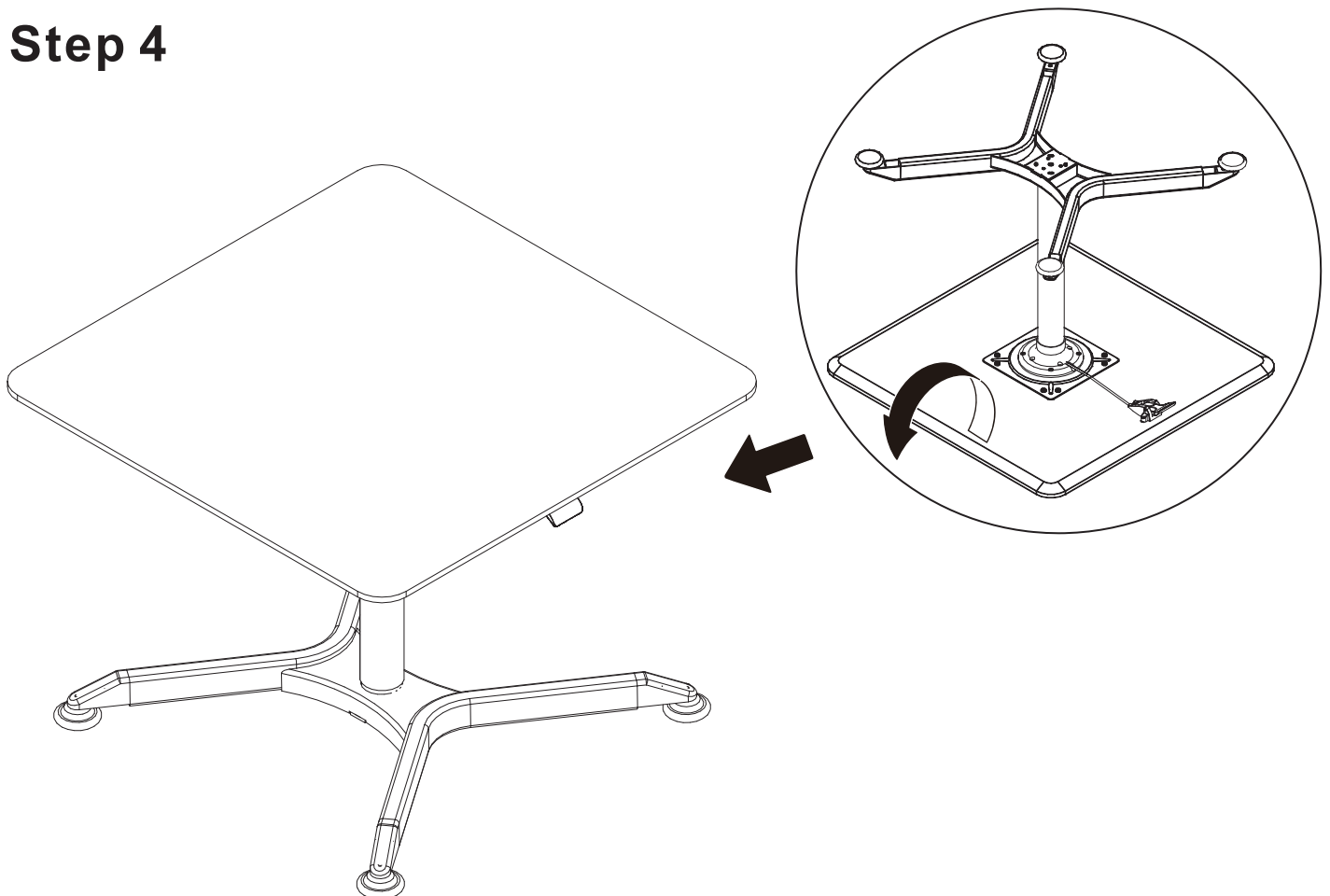
Step 2



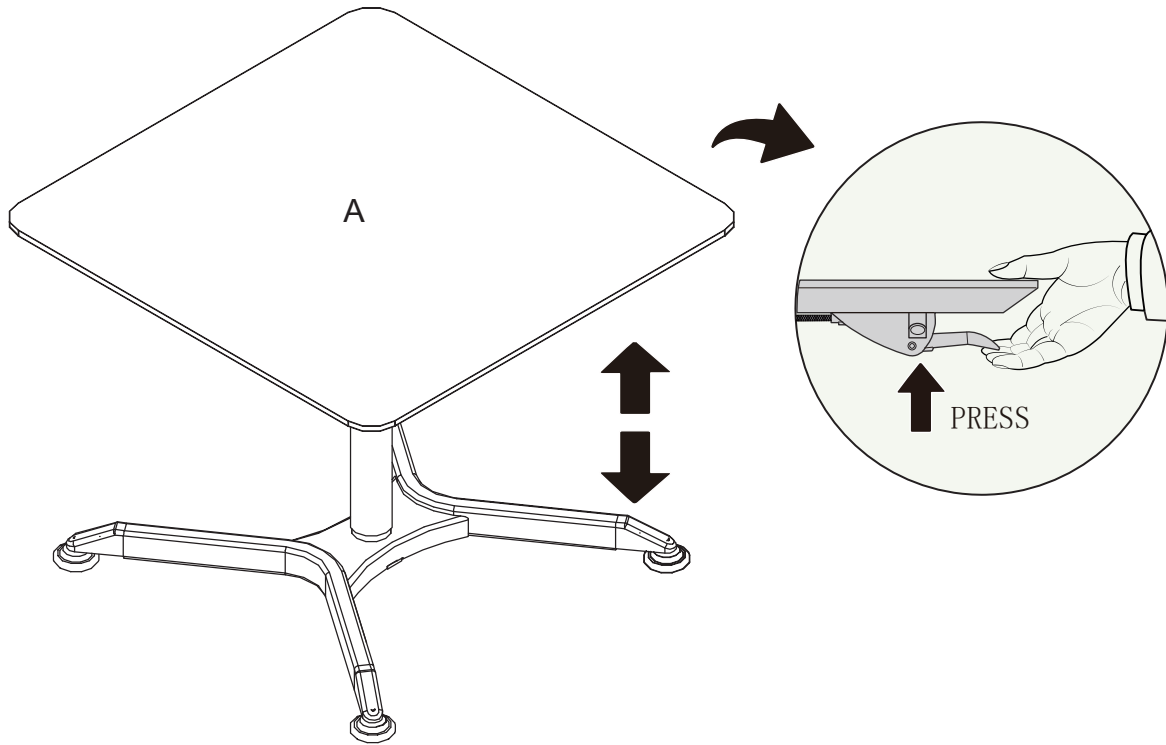
Step 3



Step 4



MAXIMUM WEIGHT CAPACITY



Maximum
loading capacity

A: 5kg

Height adjustable range

655-1035mm



CAUTION: This product is intended to hold the maximum weight indicated. Exceeding the maximum weight will result in instability and may cause injury.

Thank you for purchasing our product!

Please retain your receipt to validate warranty. If you'd like to know more about Officeworks' furniture products, please visit our website. www.officeworks.com.au